

Author Affiliation: Department of Medicine, Stanford University School of Medicine, Stanford, California (jioannid@stanford.edu).

Conflict of Interest Disclosures: The author has completed and submitted the ICMJE Form for Disclosure of Potential Conflicts of Interest and none were reported.

- Horton R. Offline: why (some) medical conferences make sense. *Lancet*. 2012; 379(9824):1376.
- Grouse L. Physicians for sale: how medical professional organizations exploit their members. *Medscape J Med*. 2008;10(7):169.
- Lundberg GD, Stacey J. *Severed Trust: Why American Medicine Hasn't Been Fixed*. New York, NY: Basic Books; 2000.
- Antman EM, Lau J, Kupelnick B, Mosteller F, Chalmers TC. A comparison of results of meta-analyses of randomized control trials and recommendations of clinical experts: treatments for myocardial infarction. *JAMA*. 1992;268(2):240-248.

RESEARCH LETTER

Mechanisms of Eye Injuries From Fireworks

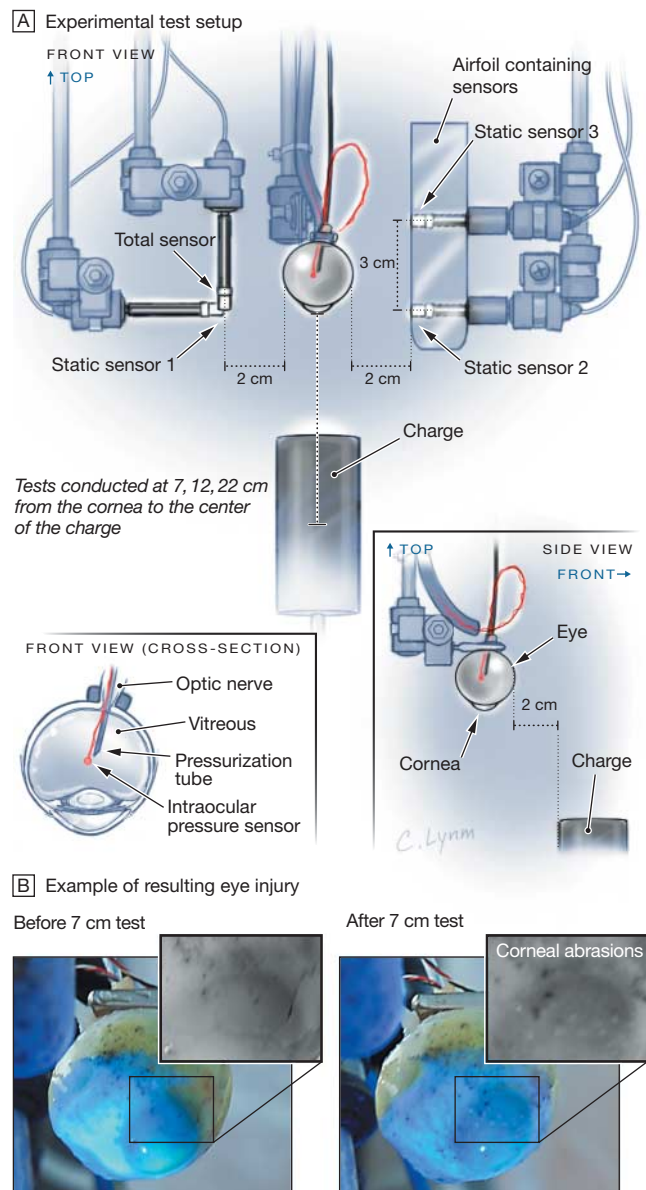
To the Editor: Injuries from fireworks are prevalent among youth.¹ The eye is the most frequently injured body part and accounts for more than 2000 injuries annually.^{2,3} Although it is suggested that the pressure wave caused by explosions (ie, blast overpressure) can cause eye injury (scleral bleeding and globe rupture), there is no clear evidence to support this. This study assessed whether blast overpressure or projected material from fireworks causes eye injuries.

Methods. Due to the variability of consumer fireworks, 10 g charges of Pyrodex gunpowder were used to simulate fireworks in a controlled, repeatable manner. Human cadaver eyes were procured from the North Carolina Eye Bank and hydrated with saline-soaked gauze. A maximum of 55 days (mean [SD], 53.3 [1.4] days) spanned death and testing, which was previously shown to not affect the response of the eye.⁴ Eyes were pressurized to physiological human intraocular pressure (14.95 mm Hg) before testing. A total of 18 open field blast tests were conducted at distances of 22 cm, 12 cm, and 7 cm from the cornea. Tests were conducted with increasing proximity to the cornea (farthest first) to minimize potential injury. A pressure sensor inserted into the vitreous measured intraocular pressure, and 4 pressure sensors mounted around the eye quantified total pressure, static pressure, and wave velocity (TABLE). Three commercial firecrackers (Bunker Buster, Dixie Dynamite, and Little Dynamite) were tested without an eye (3 tests at each distance; 27 total) to compare total pressure, static pressure, and wave velocity with the charges (FIGURE, part A).

Eyes were visually examined for injury (corneal abrasion, scleral damage, and globe rupture) and photographs were taken before and after each test. Fluorescein dye was used to visualize corneal abrasions. Systematic assessment of the photographs allowed determination of which injuries were sustained from each test (Figure, part B). High-speed video was used for confirmation of injuries.

Intraocular pressures were used to calculate the risk of physiological injuries (hyphema, lens damage, and retinal

Figure. Test Setup and Resulting Eye Injury



A, A miniature pressure sensor (Model 060S, 689 kPa, Precision Measurement Company) and a small tube were inserted through the optic nerve into the vitreous of the eye and secured in place. A bag of lactated Ringer solution attached to the tube provided an initial physiological human intraocular pressure of 1.99 kPa (14.95 mm Hg).⁵ Four pressure sensors (Model 113B21, 1379 kPa, PCB Piezotronics) were mounted around the eye. The total sensor, oriented perpendicular to the blast wave front, measured both dynamic and static pressure; the other 3 sensors, oriented parallel to the blast wave front, measured static pressure. All pressure data were collected at 301887.0 Hz (TDAS PRO, Diversified Technical Systems Inc) and zeroed immediately prior to the event. The charge was offset from the cornea to minimize the amount of material projected directly toward the eye. A Phantom v9.1 camera (Vision Research; resolution 256 × 192 pixels) recorded high-speed video at 20000 frames per second to allow frame-by-frame analysis of each test event. B, Yellow fluorescein stain with blue light illumination of eye. In the posttest photograph (right), corneal abrasions are visible in the inset (image converted to grayscale). Black dots are soot and ash from the previous test.

Table. Charge and Commercial Firecracker Pressures^a

Standoff Distance, cm	Pressure, kPa		Intraocular Pressure ^d		Wave Velocity, ms ^e	Impulse, Pas ^f
	Total ^b	Static ^c	kPa	mm Hg		
Charge						
22	21.1 (4.1)	16.9 (1.8)	21.8 (6.3)	163.6 (47.2)	379.2 (46.0)	2.3 (0.3)
12	27.4 (3.0)	25.2 (2.7)	26.8 (7.3)	200.7 (54.7)	420.3 (44.9)	3.0 (0.5)
7	51.1 (6.9)	41.6 (7.1)	36.5 (8.8)	273.9 (65.8)	465.4 (68.8)	4.0 (0.6)
Firecracker						
22	5.4 (1.2)	4.5 (0.8)	15.4 (0.5) ^g	115.2 (4.0) ^g	351.5 (9.1)	0.2 (0)
12	10.7 (4.0)	8.5 (3.1)	17.8 (1.8) ^g	133.6 (13.8) ^g	381.3 (13.2)	0.5 (0.1)
7	19.1 (8.0)	14.6 (4.5)	21.7 (3.7) ^g	162.5 (27.7) ^g	412.4 (18.9)	0.7 (0.1)

^aData are expressed as mean (SD).

^bSum of dynamic and static pressures and reported relative to standard atmospheric pressure (101.4 kPa).

^cIndicates static pressure sensor 1 and reported relative to standard atmospheric pressure (101.4 kPa).

^dReported relative to normal human physiological intraocular pressure of 1.99 kPa and 14.95 mm Hg.

^eCalculated using temporal difference between peak overpressures measured by static pressure sensors 2 and 3.

^fCalculated using trapezoidal integration of the total pressure trace over the positive duration (area under the curve).

^gCalculated using correlation between total pressure and intraocular pressure developed from the charges.

damage) from published injury risk curves developed using in vivo animal tests, which are commonly used in injury biomechanics.⁶ Injury risk for globe rupture based on human cadaver eye testing was assessed for comparison. Normalized energy was calculated using a published correlation between intraocular pressure and normalized energy, assuming the projected area of an unprotected eye was equivalent to a 11.16-mm diameter rod.⁵

Results. Minor grain-sized corneal abrasions were the only injuries observed (Figure, part B). The abrasion size and pattern suggested unspent explosive material was projected onto the eye, which was confirmed with high-speed video. Increasing proximity to the eye resulted in more abrasions.

Intraocular pressure increased with increased proximity to the charge (Table). Intraocular pressure y was linearly correlated with total overpressure x [$y(\text{kPa}) = 0.46x(\text{kPa}) + 12.97$; $R^2 = 0.5$]. Injury risk was less than or equal to 0.01% for hyphema, lens damage, retinal damage, and globe rupture.

Comment. The firework blast overpressures measured in this study did not cause serious eye injuries. The only observed injuries were minor corneal abrasions caused by projected material. Calculated injury risk was less than or equal to 0.01% for physiological eye injuries. This study provides information about injury mechanisms of fireworks that could aid in public policy decisions regarding firework laws and in the design of protective equipment. Additionally, this study offers validation data for computational models of the eye.

This study has some limitations that should be addressed in future studies. The eye was isolated from the head to minimize the confounding effects of reflective pressure waves that could affect intraocular pressure. The use of cadaver tissue did not allow for direct assessment of physiological injuries. The distances from the cornea were chosen to eliminate thermal burn as a potential injury mechanism. Eyes were exposed to multiple events to maximize the use of biological tissue and to provide a paired data set to eliminate the confounding effects of subject variability. However, the potential for adverse effects from mul-

iple exposures was considered negligible because the measured blast overpressures were relatively low and no severe injuries were observed.

Vanessa D. Alphonse, BS
Andrew R. Kemper, PhD
Brock T. Strom III, BS
Stephanie M. Beeman, MS
Stefan M. Duma, PhD

Author Affiliations: Center for Injury Biomechanics, Virginia Tech–Wake Forest University, Blacksburg, Virginia (vda@vt.edu).

Author Contributions: Ms Alphonse had full access to all of the data in the study and takes responsibility for the integrity of the data and the accuracy of the data analysis. *Study concept and design:* Alphonse, Kemper, Strom III, Beeman, Duma.

Acquisition of data: Alphonse, Kemper, Strom III, Beeman.

Analysis and interpretation of data: Alphonse, Kemper, Duma.

Drafting of the manuscript: Alphonse, Kemper, Strom III, Beeman.

Critical revision of the manuscript for important intellectual content: Alphonse, Kemper, Duma.

Obtained funding: Duma.

Administrative, technical, or material support: Alphonse, Kemper, Strom III, Beeman, Duma.

Study supervision: Kemper, Duma.

Conflict of Interest Disclosures: The authors have completed and submitted the ICMJE Form for Disclosure of Potential Conflicts of Interest and none were reported.

Funding/Support: The US Army Medical Research and Materiel Command provided funding for this study.

Role of the Sponsor: The funding agency played no role in the design and conduct of the study; collection, management, analysis, and interpretation of the data; and preparation, review, or approval of the manuscript.

1. Centers for Disease Control and Prevention (CDC). Injuries associated with home-made fireworks—selected states, 1993-2004. *MMWR Morb Mortal Wkly Rep.* 2004;53(25):562-563.

2. US Consumer Product Safety Commission. National Electronic Injury Surveillance System data, 1991-2010. <http://www.cpsc.gov/library/neiss.html>. Accessibility verified June 7, 2012.

3. Smith GA, Knapp JF, Barnett TM, Shields BJ. The rockets' red glare, the bombs bursting in air: fireworks-related injuries to children. *Pediatrics.* 1996;98(1):1-9.

4. Kennedy EA, Voorhies KD, Herring IP, Rath AL, Duma SM. Prediction of severe eye injuries in automobile accidents: static and dynamic rupture pressure of the eye. *Annu Proc Assoc Adv Automot Med.* 2004;48:165-179.

5. Duma SM, Bisplinghoff JA, Senge DM, McNally C, Alphonse VD. Evaluating the risk of eye injuries: intraocular pressure during high speed projectile impacts. *Curr Eye Res.* 2012;37(1):43-49.

6. Duma S, Kennedy E. Final report: eye injury risk functions for human and FOCUS eyes: hyphema, lens dislocation, and retinal damage. http://www.factstaff.bucknell.edu/eak012/Reports_n_Papers/Eye_Injury_Risk_Functions_for_Human_and_FOCUS_Eyes--FinalReport_W81XWH-05-2-0055--July2011Update.pdf. Accessed May 29, 2012.