

# Evaluation and Management of Laryngopharyngeal Reflux

Charles N. Ford, MD

**L**ARYNGOPHARYNGEAL REFLUX (LPR) is the result of retrograde flow of gastric contents to the laryngopharynx, where it comes in contact with tissues of the upper aerodigestive tract. It has been reported in up to 10% of patients presenting to an otolaryngologist's office,<sup>1</sup> and more than 50% of patients with hoarseness have been found to have reflux-related disease.<sup>2</sup> There is a danger in failing to recognize LPR, while overdiagnosis of LPR can lead to unnecessary costs and missed diagnoses. When a medical practitioner fails to recognize LPR, patients have prolonged symptoms and delayed healing.<sup>3</sup> Inflamed laryngeal tissues are more easily damaged from intubation, have a greater risk of progressing to formation of contact ulcers and granulomas, and often evolve to symptomatic subglottic stenosis<sup>4</sup> and lower airway disease. In a recent report, LPR symptoms were found to be more prevalent in patients with esophageal adenocarcinoma than were typical gastroesophageal reflux symptoms, and they often represented the only sign of disease.<sup>5</sup> Heightened awareness of LPR can lead to overdiagnosis of the condition because the typical LPR symptoms (excessive throat clearing, cough, hoarseness, and globus pharyngeus [a sensation of a lump in the throat]) are nonspecific<sup>6</sup> and can also be caused by infections, vocal abuse, allergy, smoking, inhaled environmental irritants, and alcohol abuse.<sup>7</sup>

**CME available online at**  
[www.jama.com](http://www.jama.com)

**Context** Laryngopharyngeal reflux (LPR) is a major cause of laryngeal inflammation and presents with a constellation of symptoms different from classic gastroesophageal reflux disease.

**Objective** To provide a practical approach to evaluating and managing cases of LPR.

**Evidence Acquisition** The PubMed database and the Ovid Database of Systematic Reviews were systematically searched for *laryngopharyngeal reflux*, *laryngopharyngeal reflux fundoplication*, *laryngopharyngeal reflux PPI treatment*, and *gastroesophageal reflux AND laryngitis*. Pertinent subject matter journals and reference lists of key research articles were also hand-searched for articles relevant to the analysis.

**Evidence Synthesis** Reflux of gastric contents is a major cause of laryngeal pathology. The pathophysiology and symptom complex of LPR differs from gastroesophageal reflux disease. Laryngeal pathology results from small amounts of refluxate—typically occurring while upright during the daytime—causing damage to laryngeal tissues and producing localized symptoms. Unlike classic gastroesophageal reflux, LPR is not usually associated with esophagitis, heartburn, or complaints of regurgitation. There is no pathognomonic symptom or finding, but characteristic symptoms and laryngoscopic findings provide the basis for validated assessment instruments (the Reflux Symptom Index and Reflux Finding Score) useful in initial diagnosis. There are 3 approaches to confirming the diagnosis of LPR: (1) response of symptoms to behavioral and empirical medical treatment, (2) endoscopic observation of mucosal injury, and (3) demonstration of reflux events by impedance and pH-monitoring studies and barium swallow esophagram. While pH monitoring remains the standard for confirming the diagnosis of gastroesophageal reflux, the addition of multichannel intraluminal impedance technology improves diagnostic accuracy for describing LPR events. Ambulatory multichannel intraluminal impedance assessment allows for identification of gaseous as well as liquid refluxate and detection of nonacid reflux events that are likely significant in confirming LPR. Although some patients respond to conservative behavioral and medical management, as is the case with gastroesophageal reflux, most require more aggressive and prolonged treatment to achieve regression of symptoms and laryngeal tissue changes. Surgical intervention such as laparoscopic fundoplication is useful in selected recalcitrant cases with laxity of the gastroesophageal sphincter.

**Conclusions** Laryngopharyngeal reflux should be suspected when the history and laryngoscopy findings are suggestive of the diagnosis. Failure to respond to a 3-month trial of behavioral change and gastric acid suppression by adequate doses of proton pump inhibitor medication dictates need for confirmatory studies. Multichannel intraluminal impedance and pH-monitoring studies are most useful in confirming LPR and assessing the magnitude of the problem.

*JAMA*. 2005;294:1534-1540

[www.jama.com](http://www.jama.com)

## EVIDENCE ACQUISITION

The PubMed database was systematically searched using the natural language phrases *laryngopharyngeal reflux*, *laryngopharyngeal reflux fundoplication*, and *laryngopharyngeal reflux PPI treatment*. These phrases were

**Author Affiliation:** Department of Surgery, Division of Otolaryngology, University of Wisconsin, Madison.

**Corresponding Author:** Charles N. Ford, MD, University of Wisconsin Clinical Science Center, 600 Highland Ave, K4/714, Madison, WI 53792 (ford@surgery.wisc.edu).

**Clinical Review Section Editor:** Michael S. Lauer, MD. We encourage authors to submit papers for consideration as a "Clinical Review." Please contact Michael S. Lauer, MD, at [lauer@ccf.org](mailto:lauer@ccf.org).

**Table.** Clinical Clues to Distinguish LPR From Other Causes of Hoarseness

	LPR	Infection	Rhinosinusitis (Postnasal Drip)	Allergy	Benign Vocal Fold Lesion	Malignant Vocal Fold Lesion
Hoarseness characteristic	Fluctuates	Acute, resolves	Acute/chronic or recurrent	Fluctuates	Constant	Progressive
Throat pain	Common (with cough, throat clearing)	Yes	Uncommon	No	From secondary muscle tension	Late (local and referred)
Laryngeal findings	Edema, granuloma, erythema, pseudosulcus	Erythema, edema	Secretions (thick, discolored), edema	Edema, clear secretions, bluish mucosa	Nodules, polyps, cysts, scars	Ulcerative or exophytic (red-white mass), stiff
Aggravating factors	Smoking, obesity, diet/lifestyle	Systemic infection, immunosuppression	LPR, allergy, smoking	Environment, seasonal	Smoking, vocal trauma, LPR	Smoking (common), LPR, ethanolism

Abbreviation: LPR, laryngopharyngeal reflux.

used individually, with no language or date restrictions. PubMed was then searched using the Medical Subject Heading terms *gastroesophageal reflux* and *laryngitis*. These terms were combined using the AND operator and were limited by language to English, by date range to 2001-2005, and by publication type to randomized controlled trial OR clinical trial. The Ovid version of the Cochrane Database of Systematic Reviews was also searched using the key-word combination of *laryngitis.mp* and *reflux.mp*.

All retrieval sets generated by the PubMed and Ovid searches were reviewed for relevant citations addressing core issues of diagnosis, assessment, and management. The reference lists of all relevant citations were reviewed for further material describing validation of diagnostic instruments and basic science addressing pathogenesis and evolving technology. References in the Cochrane Database of Systematic Reviews protocol for reviewing acid reflux treatment of hoarseness were particularly useful.

## EVIDENCE SYNTHESIS

### Pathogenesis

Laryngopharyngeal reflux differs from gastroesophageal reflux disease (GERD) in that it is often not associated with heartburn and regurgitation symptoms.<sup>8</sup> The larynx is vulnerable to gastric reflux, so patients often present with laryngopharyngeal symptoms in the absence of heartburn and regurgitation.<sup>8</sup> There are 4 physiological barriers pro-

tecting the upper aerodigestive tract from reflux injury: the lower esophageal sphincter, esophageal motor function with acid clearance, esophageal mucosal tissue resistance, and the upper esophageal sphincter.<sup>1</sup> The delicate ciliated respiratory epithelium of the posterior larynx that normally functions to clear mucus from the tracheobronchial tree is altered when these barriers fail, and the resultant ciliary dysfunction causes mucus stasis.<sup>9</sup> The subsequent accumulation of mucus produces postnasal drip sensation and provokes throat clearing. Direct refluxate irritation can cause coughing and choking (laryngospasm) because sensitivity in laryngeal sensory endings is up-regulated by local inflammation.<sup>9</sup> This combination of factors can lead to vocal fold edema, contact ulcers, and granulomas that cause other LPR-associated symptoms: hoarseness, globus pharyngeus, and sore throat.<sup>1</sup>

Recent investigations suggest that vulnerable laryngeal tissues are protected from reflux damage by the pH-regulating effect of carbonic anhydrase in the mucosa of the posterior larynx.<sup>10</sup> Carbonic anhydrase catalyzes hydration of carbon dioxide to produce bicarbonate; this protects tissues from acid refluxate. In the esophagus, there is active production of bicarbonate in the extracellular space that functions to neutralize refluxed gastric acid. There is no active pumping of bicarbonate in laryngeal epithelium and carbonic anhydrase isoenzyme III, expressed at high levels in normal la-

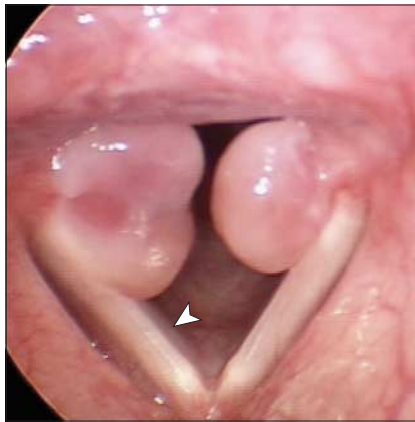
ryngeal epithelium, was absent in 64% (47/75) of biopsy specimens from laryngeal tissues of LPR patients.<sup>11</sup>

### Diagnosis

**History.** It is important for physicians to appreciate the potential significance of hoarseness and the relative nonspecificity of laryngitis. Laryngitis is a nonspecific designation of laryngeal inflammation.<sup>12</sup> Often, it is mild and resolves spontaneously. When persistent, laryngitis must be further defined based on probable etiologic factors: viral or bacterial infection, allergy, vocal trauma, postnasal discharge, or LPR (TABLE). Persistent or progressive hoarseness lasting beyond 2 to 3 weeks requires examination of the laryngopharynx to rule out cancer and other serious conditions. This is generally considered good practice; however, laryngeal examination is particularly important in suspected LPR because of the apparent known association of LPR and upper aerodigestive tract cancer.<sup>5,13</sup>

Laryngopharyngeal reflux should be suspected when clinical history and initial findings are suggestive. Failure to appreciate LPR as different from GERD has been a major source of skepticism about the diagnosis in the past. Koufman<sup>1</sup> was the first to clearly distinguish LPR from GERD, noting that in a combined reported series of 899 patients, throat clearing was a complaint of 87% of LPR patients vs 3% of those with GERD, while only 20% of LPR patients complained of heartburn vs 83%

**Figure 1.** Reflux-Induced Granulomas and Pseudosulcus



This rigid telescopic view shows a larynx with large bilateral granulomas based on the medial surfaces of the arytenoids (top). A prominent pseudosulcus is identified (arrowhead), representing typical infraglottic edema associated with laryngopharyngeal reflux.

in the GERD group. An international survey of American Bronchoesophagological Association members revealed that the most common LPR symptoms were throat clearing (98%), persistent cough (97%), globus pharyngeus (95%), and hoarseness (95%).<sup>14</sup> Based on a careful study of pH probe-confirmed LPR cases, Belafsky et al<sup>15</sup> developed a useful self-administered tool, the Reflux Symptom Index, that can help clinicians assess the relative degree of LPR symptoms during initial evaluation and after treatment. Patients are asked to use a 0- to 5-point scale to grade the following symptoms: (1) hoarseness or voice problem, (2) throat clearing, (3) excess throat mucus or postnasal drip, (4) difficulty swallowing, (5) coughing after eating or lying down, (6) breathing difficulties or choking spells, (7) troublesome or annoying cough, (8) sensation of something sticking or a lump in the throat, and (9) heartburn, chest pain, indigestion, or stomach acid coming up. The Reflux Symptom Index score in untreated LPR patients was significantly higher than in controls (21.2 vs 11.6;  $P < .001$ ). Since the 95% upper confidence limit for controls was 13.6, a Reflux Symptom Index score

greater than 13 is considered abnormal. When hoarseness is a prominent symptom, acoustic voice analysis measuring frequency, intensity, perturbation, and signal-to-noise ratio provides an objective way to document symptom severity and progress of the disease.<sup>2</sup>

**Laryngoscopy.** Nonspecific signs of laryngeal irritation and inflammation are usually seen, but several findings are highly suggestive of LPR. Although not pathognomonic, thickening, redness, and edema concentrated in the posterior larynx—"posterior laryngitis"—is a common finding.<sup>7</sup> Based on a color analysis, Hanson and Jiang<sup>9</sup> quantified the degree of erythema as a measure of posterior laryngitis. Other laryngoscopic findings have a strong association with LPR. Contact granuloma was found to be associated with pH monitoring-confirmed cases of LPR in 65% to 74% of patients.<sup>16,17</sup> Frequently, the medial edge of the vocal fold appears to have a linear indentation due to diffuse infraglottic edema (FIGURE 1). Although this gives the illusion of a pathological condition of the vocal fold called sulcus vocalis, in which there is a medial edge concavity of the vocal fold (sulcus) due to fibrosis and tissue loss, it lacks the fibrotic changes of pathological sulcus vocalis.<sup>18</sup> This finding is termed pseudosulcus and has been reported in as much as 90% of LPR cases.<sup>19</sup> In a comparison of 30 LPR patients and 30 controls, those with pseudosulcus were 2.5 times more likely to have pH testing-confirmed LPR ( $P < .001$ ).<sup>20</sup> Although the sensitivity and specificity of finding pseudosulcus in LPR patients were only 70% and 77%, respectively, pseudosulcus remains highly suggestive of LPR.

Since there is no pathognomonic LPR finding, Belafsky et al<sup>21</sup> developed an 8-item clinical severity scale for judging laryngoscopic findings, the Reflux Finding Score, which appears to be useful for assessment and follow-up of LPR patients. They rated 8 LPR-associated findings on a variably weighted scale from 0 to 4: subglottic edema, ventricular obliteration, erythema/hyperemia, vo-

cal fold edema, diffuse laryngeal edema, posterior commissure hypertrophy, granuloma, and thick endolaryngeal edema. The results could range from 0 (normal) to 26 (worst possible score). Based on their analysis, one can be 95% certain that a patient with a Reflux Finding Score of 7 or more will have LPR.

**Confirming Reflux.** There are 3 approaches to confirming the diagnosis: response of symptoms to behavioral and empirical medical treatment, endoscopic observation of mucosal injury, and demonstration of reflux events by multichannel impedance and pH-monitoring studies. Additional studies, including radiography, esophageal manometry, spectrophotometric measurement of bile reflux, and mucosal biopsy, can provide information useful in targeting therapy.

Because many patients respond well to behavioral modification and initial medical management, an acid suppression trial is a frequently used approach to initial diagnosis.<sup>22</sup> The mainstay of empirical treatment is proton pump inhibitor (PPI) medication for at least 3 months.

Endoscopic examination should include flexible or rigid laryngoscopy in all suspected cases. Transnasal esophagoscopy and esophagogastroduodenoscopy (EGD) are useful in detecting characteristic associated mucosal injury, esophagitis, and Barrett esophagus. Overall, EGD and 24-hour pH-monitoring studies have proven less useful in detecting LPR than in identifying GERD. While EGD reveals esophageal lesions in 50% of typical GERD patients, it is abnormal in less than 20% of LPR laryngitis patients.<sup>23</sup>

Demonstration of reflux events is best achieved with ambulatory multichannel intraluminal impedance (MCII) and pH-monitoring studies.<sup>24</sup> This approach is based on changes in resistance to alternating current between a series of metal electrodes produced by intraluminal gas, liquid, or bolus. When combined with pH transducers, it makes it possible to give a more complete description of reflux events.<sup>25</sup> Not only can acid and nonacid reflux events

be detected but, also, liquid (decreased impedance) as well as gaseous (increased impedance) events can be identified. Although controversy exists, an LPR event is evident when pH in the proximal sensor abruptly drops to less than 4 during or immediately after distal acid exposure (exposure near the lower esophageal sphincter) and LPR is confirmed when total acid exposure time (percentage of time during 24-hour monitoring when the sensor detects pH levels <4) is more than 1%.<sup>24</sup> Reflux is often associated with esophageal dysmotility, including non-progressive (tertiary) contractions, increased amplitude and duration of contractions, and increased tone.<sup>1</sup> Multichannel intraluminal impedance software technology combined with manometry allows for graphic displays of simulated esophageal motility, sphincter competence, and bolus transport, so the use of barium swallow studies is more limited in LPR assessment.

## Treatment

**Patient Education and Behavioral Change.** Patients with LPR should be educated as to the nature of the problem and counseled on helpful behavioral and dietary changes.<sup>26</sup> Important behavioral changes include weight loss, smoking cessation, and alcohol avoidance. Ideal dietary changes would restrict chocolate, fats, citrus fruits, carbonated beverages, spicy tomato-based products, red wines, caffeine, and late-night meals. Such behavioral changes appear to be an independently significant variable in determining response to medical therapy.<sup>27</sup> Education should include the optimal schedule for taking PPI medications (omeprazole, esomeprazole, rabeprazole, lansoprazole, and pantoprazole), which work best when taken 30 to 60 minutes before meals.

**Medical Management.** There are 4 categories of drugs used in treating LPR: PPIs, H<sub>2</sub>-receptor antagonists, prokinetic agents, and mucosal cytoprotectants. Proton pump inhibitors are considered the mainstay of medical treatment,<sup>28</sup> although there is some contro-

versy regarding their efficacy. A 3-month empirical trial is a cost-effective approach to initial assessment and management.<sup>29,30</sup> Responders can be weaned, while nonresponders should undergo studies to confirm LPR.

Other drugs have been used to treat LPR. Ranitidine has proven a more potent inhibitor of gastric secretion than cimetidine and is the H<sub>2</sub>-receptor antagonist of choice,<sup>31</sup> although it has been found to be of limited value in treating LPR.<sup>32</sup> Prokinetic agents that accelerate esophageal clearance and increase lower esophageal sphincter pressure have fallen out of favor because of reported adverse effects of ventricular arrhythmias and diarrhea.<sup>33</sup> Cisapride has been discontinued because of such serious adverse effects. Tegaserod is a prokinetic agent that was recently demonstrated to decrease reflux and lower esophageal sphincter relaxation events<sup>34</sup> and that we have found useful in treating some LPR cases with associated esophageal dyskinnesia. Sucralfate is a polysulfated salt of sucrose that may be helpful as an adjunct in protecting injured mucosa from harmful effects of pepsin and acid.<sup>35,36</sup> Antacids (sodium bicarbonate-, aluminum-, and magnesium-containing over-the-counter antacids) may relieve GERD symptoms but do not play a role in LPR management.<sup>26</sup>

**Surgery.** When medical management fails, patients with demonstrable high-volume liquid reflux and lower sphincter incompetence are often candidates for surgical intervention. Fundoplication, either complete (Nissen or Rossetti) or partial (Toupet or Bore), is the most common procedure performed, and the laparoscopic approach is preferred.<sup>2</sup> The goal of surgery is to restore competence of the lower esophageal sphincter, and the outcome measures for LPR include demonstration of reduced pharyngeal reflux episodes. Excellent results have been reported in 85% to 95% of reflux cases<sup>37</sup> but results with LPR are not as impressive.<sup>22</sup> Focusing on a carefully screened group of patients with demonstrable extraesophageal reflux (LPR), Oelschlager et al<sup>38</sup> reported a signifi-

cant decrease in pharyngeal reflux (7.9 to 1.6 episodes per 24 hours;  $P < .05$ ) and esophageal acid exposure (7.5% to 2.1%;  $P < .05$ ) following basic laparoscopic Nissen fundoplication surgery. Fundoplication appears superior to medical management in preventing Barrett metaplasia.<sup>39</sup> Although there is interest in recent nonfundoplication endoscopic techniques (Bard EndoCinch System for endoluminal plication, C. R. Bard, Murray Hill, NJ; Stretta System for radiofrequency-induced thermal injury, Curon Medical, Fremont, Calif; and Enteryx liquid polymer injection, Boston Medical, Natick, Mass) to improve lower esophageal sphincter function, there are no controlled studies and there is no long-term follow-up evidence to support their use.<sup>40</sup>

## CONTROVERSIES

While there is an increased appreciation of LPR as distinct from GERD, controversy remains regarding how to confirm the diagnosis and what comprises appropriate medical management. In mild LPR cases, symptoms and physical findings lack sufficient specificity; similar symptoms can result from smoking, toxic inhalants, allergies, and postnasal discharge. Assessing treatment regimens is complicated because clinical trials are vulnerable to placebo effect, uncontrolled behavioral changes, and the variable natural history of LPR.<sup>23,41,42</sup> Apparently, 25% of LPR patients experience spontaneous resolution of symptoms and 50% have a chronic course of disease, with intermittent exacerbations and remissions.<sup>1</sup>

## Physical Findings

Laryngoscopic findings can be misleading, as shown in several studies in which asymptomatic participants revealed findings similar to those seen in LPR-proven patients. Lundy et al<sup>43</sup> found posterior erythema in 73% of asymptomatic singing students and Hicks et al<sup>41</sup> found tissue changes associated with LPR in a group of more than 100 asymptomatic volunteers. Lack of a reliable clinical marker has confounded progress in the diagnosis and treat-

ment of LPR.<sup>23</sup> Some trials based on clinical diagnosis have been misinterpreted because of lax inclusion criteria. The symptoms and physical findings of mild LPR can be confused with other laryngeal inflammations and non-pathological variations. Since patients with advanced LPR and obvious posterior laryngitis probably differ from patients with milder cases that might have alternative etiologies; future efficacy studies should be rigorous in their exclusion criteria and/or stratify patients in the treatment group.<sup>44</sup> A breakthrough in LPR diagnosis may evolve from recent immunohistochemical studies of laryngeal biopsy specimens showing concentration of pepsin and

depletion of carbonic anhydrase isoenzyme III in documented LPR cases.<sup>45</sup>

**pH Monitoring**

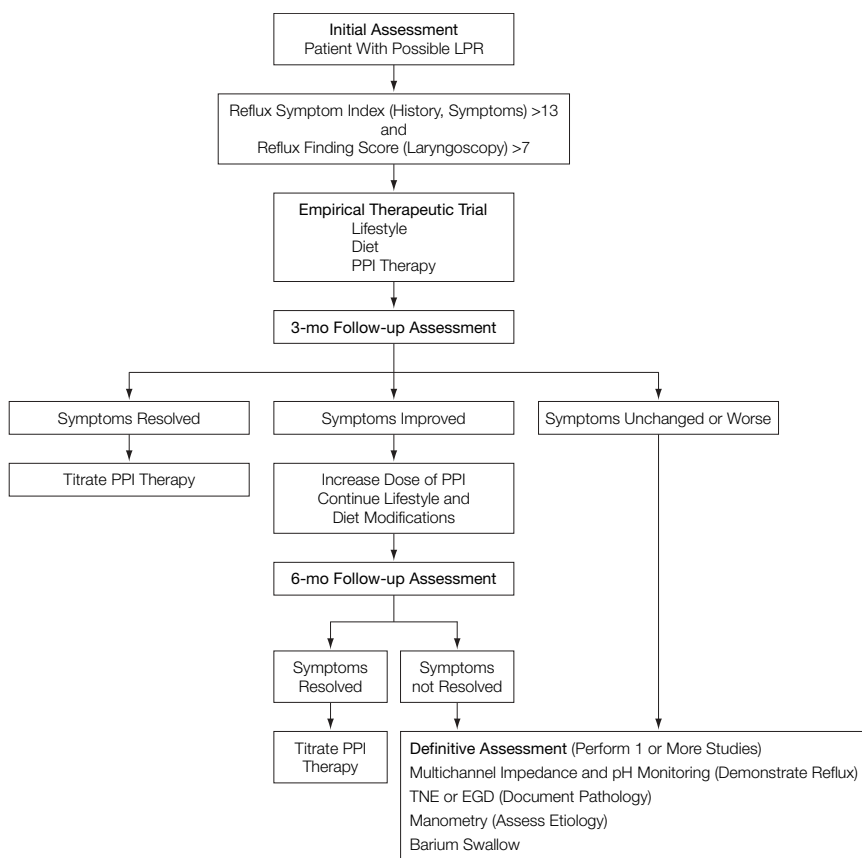
Hydrogen ion concentration monitoring is considered the gold standard in detecting GERD, but it is less reliable in confirming LPR.<sup>46</sup> Variability in testing methods and lack of agreement on normative values have raised questions about the sensitivity of pH-monitoring studies for detecting LPR.<sup>44,47,48</sup> In some studies, the proximal probe was placed below the upper esophageal sphincter and in others in the hypopharynx, where it is considered closer to the site of injury.<sup>49</sup> High placement of the proximal probe is subject to spurious drops in pH

related to the wide-open pharynx and intermittent probe drying. The recently developed Bravo wireless pH-monitoring system (Medtronic Inc, Shoreview, Minn) allows for precise endoscopic placement of the pH transducer at the upper esophageal sphincter. A pinch of esophageal mucosa is used to secure the Bravo capsule, and the patient wears a pager-sized monitor during 48 hours of normal activity. The capsule passes in 3 to 5 days with the superficial sloughing of mucosa. This has been proven more effective in children and some adults who fail to tolerate an external catheter.<sup>50</sup>

Disagreement about normative values adds to the controversy. An abrupt decrease in pH to less than 4 in the proximal probe following or synchronous with a drop at the lower esophageal sphincter is considered a default cutoff value,<sup>51</sup> but this is largely based on lower esophageal standards applied to GERD. In the hypopharynx, a drop to less than 5 is probably a more reliable indicator of proximal reflux because neutralizing factors such as saliva and airway secretions can raise pH values.<sup>52</sup> Failure to demonstrate clinical correlation in pH studies can result from not recognizing the minimal amount of gastric refluxate necessary to cause laryngeal inflammation (in patients with LPR) or from not considering alternative sources of laryngeal inflammation in control groups.<sup>48</sup>

An important recent meta-analysis of 16 double pH-probe studies showed consistency and accuracy in distinguishing healthy persons vs those with LPR where techniques were tightly controlled.<sup>51</sup> Upper probe placement at 2 cm above the upper esophageal sphincter was considered critical; higher placement reduces contact of the sensor with mucosa, drying, and false-positive readings, whereas events at or below the sphincter fail to correlate with LPR symptoms. This study affirmed that while healthy persons experienced some reflux events, the acid exposure time percentage is very reliable in differentiating persons with and without LPR. Using a mixed-effects model, LPR was found to be a statistically significant risk

**Figure 2.** Algorithm for Assessment and Management of LPR



When the history and clinical examination are suggestive of laryngopharyngeal reflux (LPR), patients are instructed in lifestyle and dietary changes. Proton pump inhibitor (PPI) therapy is started and the patient is reassessed 3 months later. Failure to respond dictates a pathway to definitive assessment and continued monitoring. Those showing improvement proceed with more medical treatment, whereas those with resolution of symptoms have PPI treatment tapered. TNE indicates transnasal esophagoscopy; EGD, esophagogastroduodenoscopy.

factor for experiencing objective reflux events (odds ratio, 9.19; 95% confidence interval, 5.4-15.4;  $P < .001$ ).

Another problem with standard pH probe-monitoring studies is failure to account for bouts of potentially harmful gaseous and/or nonacid refluxate. This is where impedance testing is superior.<sup>24</sup> Gaseous reflux events associated with small pH drops ( $>1$ ) have been found with significantly greater frequency in patients with LPR than in those with GERD or in healthy controls. The ability to detect gaseous and mixed (gaseous-liquid) events is particularly important in patients with LPR because gases are more diffusible and can reach higher laryngeal structures. Furthermore, impedance testing detects potentially harmful nonacidic reflux. Pellegrini et al<sup>33</sup> called attention to alkaline gastroesophageal reflux long ago, and Galli et al<sup>54</sup> demonstrated laryngopharyngeal damage in patients whose gastrectomy procedures resulted in anatomically predictable bile reflux. In a recent report, Sasaki et al<sup>55</sup> demonstrated marked inflammatory histological changes in rat laryngeal mucosa exposed to bile salts in both acid and alkaline media; he suggested that biliary and acid reflux may exert a synergistic role in damaging esophageal mucosa. This finding might also explain some of the therapeutic failures of acid suppression used as the sole treatment for LPR.

### Efficacy of PPI Treatment

Unlike with GERD, response to PPI therapy in patients with LPR has been described as highly variable.<sup>22</sup> This is in part because LPR requires more aggressive and prolonged therapy than GERD.<sup>56</sup> Clinical trials have failed to quell the controversy because studies have had different inclusion criteria, failed to stratify populations based on LPR severity, lacked adequate controls, and, often, used inappropriate dosage or duration of therapy.<sup>27,29,42,57,58</sup> Confounding factors can undermine conclusions; for example, in a class I randomized, placebo-controlled trial designed to demonstrate the efficacy of PPI

therapy for LPR, Steward et al<sup>27</sup> found that lifestyle modification for 2 months, with or without PPI therapy, significantly improved chronic laryngitis symptoms. In a recent open-labeled, prospective cohort study, Park et al<sup>56</sup> shed some light on the controversy. They concluded that twice-daily dosing of PPI resulted in significantly higher symptom relief than daily dosing ( $P = .03$ ) and noted that nonresponders improved when twice-daily dosage was extended from 2 to 4 months. Like Fackler et al,<sup>32</sup> they found that the addition of H<sub>2</sub>-antagonist therapy at bedtime was of no added benefit. Further clarification is anticipated based on the Cochrane Database of Systematic Reviews protocol that will focus on clinical trials with attention to randomization, selection bias, blinding process, and outcome assessment in reviewing acid reflux treatment of hoarseness.<sup>2</sup>

### RECOMMENDATIONS AND CONCLUSIONS

The algorithm in FIGURE 2 summarizes an approach to assessment and management of LPR-induced hoarseness. It begins with clinical evaluation and progresses to an empirical trial of lifestyle and dietary changes and initiation of PPI therapy. Although most patients can experience symptomatic improvement in 3 months, it often takes at least 6 months for the laryngeal symptoms and related physical findings to resolve.<sup>9</sup> Unlike GERD, treatment for LPR must be more aggressive and prolonged in many cases to achieve resolution.<sup>8,56</sup> Patients whose LPR has resolved should have drugs titrated off, while others who show signs of improvement should be treated with omeprazole, 40 mg (or an equivalent PPI), twice daily 30 to 60 minutes before meals.

Cases that fail to substantially improve with aggressive medical management over 3 months require definitive assessment. Ambulatory MCII with pH monitoring is currently the most effective way to demonstrate LPR. Where such technology is not available, multichannel pH monitoring remains a

well-tested option. Mucosal injury, hiatal hernia, and other esophageal pathology such as Barrett esophagus should be documented by esophagoscopy (transnasal esophagoscopy or EGD). Barium swallow esophagoscopy, manometry, and MCII with manometry can be helpful in demonstrating pathology, describing dysmotility problems, and guiding the surgeon in planning fundoplication surgery. Patients whose LPR fails to resolve after definitive medical or surgical treatment must be followed indefinitely with careful examination of the upper aerodigestive tract for signs of complications and malignancy.<sup>5</sup>

**Financial Disclosures:** None reported.

**Acknowledgment:** I thank Eric A. Gaumnitz, MD, Gastroenterology Section, University of Wisconsin, for his careful reading of an early version of the manuscript and helpful suggestions.

### REFERENCES

1. Koufman JA. The otolaryngologic manifestations of gastroesophageal reflux disease (GERD): a clinical investigation of 225 patients using ambulatory 24-hour pH monitoring and an experimental investigation of the role of acid and pepsin in the development of laryngeal injury. *Laryngoscope*. 1991;101(4 pt 2 suppl 53): 1-78.
2. Hopkins C, Yousaf U, Pedersen M. Acid reflux treatment for hoarseness [protocol]. *Cochrane Database Syst Rev*. 2005(3) Accession No. 00075320-10000000-03935.
3. Ford CN. Advances and refinements in phono-surgery. *Laryngoscope*. 1999;109:1891-1900.
4. Maronian NC, Azadeh H, Waugh P, Hillel A. Association of laryngopharyngeal reflux disease and subglottic stenosis. *Ann Otol Rhinol Laryngol*. 2001;110: 606-612.
5. Reavis KM, Morris CD, Gopal DV, Hunter JG, Jobe BA. Laryngopharyngeal reflux symptoms better predict the presence of esophageal adenocarcinoma than typical gastroesophageal reflux symptoms. *Ann Surg*. 2004;239:849-856.
6. Tauber S, Gross M, Issing WJ. Association of laryngopharyngeal symptoms with gastroesophageal reflux disease. *Laryngoscope*. 2002;112:879-886.
7. Ylitalo R, Lindstedt PA, Ramel S. Symptoms, laryngeal findings, and 24-hour pH monitoring in patients with suspected gastroesophago-pharyngeal reflux. *Laryngoscope*. 2001;111:1735-1741.
8. Koufman J, Sataloff RT, Toohill R. Laryngopharyngeal reflux: consensus conference report. *J Voice*. 1996; 10:215-216.
9. Hanson DG, Jiang JJ. Diagnosis and management of chronic laryngitis associated with reflux. *Am J Med*. 2000;108(suppl 4a):1125-1195.
10. Axford SE, Sharp N, Ross PE, et al. Cell biology of laryngeal epithelial defenses in health and disease: preliminary studies. *Ann Otol Rhinol Laryngol*. 2001; 110:1099-1108.
11. Johnston N, Bulmer D, Gill GA, et al. Cell biology of laryngeal epithelial defenses in health and disease: further studies. *Ann Otol Rhinol Laryngol*. 2003;112: 481-491.
12. McMurray JS, Ford CN. Hoarseness and laryngitis. In: Rakel RE, ed. *Conn's Current Therapy 2000*. Philadelphia, Pa: WB Saunders Co; 2000:25-31.

13. Morrison MD. Is chronic gastroesophageal reflux a causative factor in glottic carcinoma? *Otolaryngol Head Neck Surg.* 1988;99:370-373.
14. Book DT, Rhee JS, Toohill RJ, Smith TL. Perspectives in laryngopharyngeal reflux: an international survey. *Laryngoscope.* 2002;112:1399-1406.
15. Belafsky PC, Postma GN, Koufman JA. Validity and reliability of the Reflux Symptom Index (RSI). *J Voice.* 2002;16:274-277.
16. Ohman L, Olofsson J, Tibbling L, Ericsson G. Esophageal dysfunction in patients with contact ulcer of the larynx. *Ann Otol Rhinol Laryngol.* 1983;92:228-230.
17. Ylitalo R, Ramel S. Extraesophageal reflux in patients with contact granuloma: a prospective controlled study. *Ann Otol Rhinol Laryngol.* 2002;111:441-446.
18. Ford CN, Inagi K, Khidr A, Bless DM, Gilchrist KW. Sulcus vocalis: a rational analytical approach to diagnosis and management. *Ann Otol Rhinol Laryngol.* 1996;105:189-200.
19. Hickson C, Simpson CB, Falcon R. Laryngeal pseudosulcus as a predictor of laryngopharyngeal reflux. *Laryngoscope.* 2001;111:1742-1745.
20. Belafsky PC, Postma GN, Koufman JA. The association between laryngeal pseudosulcus and laryngopharyngeal reflux. *Otolaryngol Head Neck Surg.* 2002;126:649-652.
21. Belafsky PC, Postma GN, Koufman JA. The validity and reliability of the Reflux Finding Score (RFS). *Laryngoscope.* 2001;111:1313-1317.
22. Vaezi MF. Extraesophageal manifestations of gastroesophageal reflux disease. *Clin Cornerstone.* 2003;5:32-38.
23. Vaezi MF. Laryngitis and gastroesophageal reflux disease: increasing prevalence or poor diagnostic tests? *Am J Gastroenterol.* 2004;99:786-788.
24. Kawamura O, Aslam M, Rittmann T, Hofmann C, Shaker R. Physical and pH properties of gastroesophageal refluxate: a 24-hour simultaneous ambulatory impedance and pH monitoring study. *Am J Gastroenterol.* 2004;99:1000-1010.
25. Srinivasan R, Vela MF, Katz PO, Tutuian R, Castell JA, Castell DO. Esophageal function testing using multichannel intraluminal impedance. *Am J Physiol Gastrointest Liver Physiol.* 2001;280:G457-G462.
26. Katz PO, Castell DO. Medical therapy of supraesophageal gastroesophageal reflux disease. *Am J Med.* 2000;108(suppl 4a):170S-177S.
27. Steward DL, Wilson KM, Kelly DH, et al. Proton pump inhibitor therapy for chronic laryngopharyngitis: a randomized placebo-control trial. *Otolaryngol Head Neck Surg.* 2004;131:342-350.
28. Berardi RR. A critical evaluation of proton pump inhibitors in the treatment of gastroesophageal reflux disease. *Am J Manag Care.* 2000;6:S491-S505.
29. Williams RB, Szczesniak MM, Maclean JC, Brake HM, Cole IE, Cook IJ. Predictors of outcome in an open label, therapeutic trial of high-dose omeprazole in laryngitis. *Am J Gastroenterol.* 2004;99:777-785.
30. Fass R. Empirical trials in treatment of gastroesophageal reflux disease. *Dig Dis.* 2000;18:20-26.
31. Richards DA. Comparative pharmacodynamics and pharmacokinetics of cimetidine and ranitidine. *J Clin Gastroenterol.* 1983;5(suppl 1):81-90.
32. Fackler WK, Ours TM, Vaezi MF, Richter JE. Long-term effect of H<sub>2</sub>RA therapy on nocturnal gastric acid breakthrough. *Gastroenterology.* 2002;122:625-632.
33. de Caestecker J. Prokinetics and reflux: a promise unfulfilled. *Eur J Gastroenterol Hepatol.* 2002;14:5-7.
34. Kahrilas PJ, Quigley EM, Castell DO, Spechler SJ. The effects of tegaserod (HTF 919) on oesophageal acid exposure in gastro-oesophageal reflux disease. *Aliment Pharmacol Ther.* 2000;14:1503-1509.
35. Castell DO. Future medical therapy of reflux esophagitis. *J Clin Gastroenterol.* 1986;8(suppl 1):81-85.
36. Storr M, Meining A, Allescher HD. Pathophysiology and pharmacological treatment of gastroesophageal reflux disease. *Dig Dis.* 2000;18:93-102.
37. Fuchs KH, Breithaupt W, Fein M, Maroske J, Hammer I. Laparoscopic Nissen repair: indications, techniques and long-term benefits. *Langenbecks Arch Surg.* 2005;390:197-202.
38. Oelschlaeger BK, Eubanks TR, Oleynikov D, Pope C, Pellegrini CA. Symptomatic and physiologic outcomes after operative treatment for extraesophageal reflux. *Surg Endosc.* 2002;16:1032-1036.
39. Wetscher GJ, Gadenstaetter M, Klingler PJ, et al. Efficacy of medical therapy and antireflux surgery to prevent Barrett's metaplasia in patients with gastroesophageal reflux disease. *Ann Surg.* 2001;234:627-632.
40. Rothstein RI, Filipi CJ. Endoscopic suturing for gastroesophageal reflux disease: clinical outcome with the Bard EndoCinch. *Gastrointest Endosc Clin N Am.* 2003;13:89-101.
41. Hicks DM, Ours TM, Abelson TI, Vaezi MF, Richter JE. The prevalence of hypopharynx findings associated with gastroesophageal reflux in normal volunteers. *J Voice.* 2002;16:564-579.
42. Noordzij JP, Khidr A, Evans BA, et al. Evaluation of omeprazole in the treatment of reflux laryngitis: a prospective, placebo-controlled, randomized, double-blind study. *Laryngoscope.* 2001;111:2147-2151.
43. Lundy DS, Casiano RR, Sullivan PA, Roy S, Xue JW, Evans J. Incidence of abnormal laryngeal findings in asymptomatic singing students. *Otolaryngol Head Neck Surg.* 1999;121:69-77.
44. Nostrant TT. Gastroesophageal reflux and laryngitis: a skeptic's view. *Am J Med.* 2000;108(suppl 4a):149S-152S.
45. Johnston N, Knight J, Dettmar PW, Lively MO, Koufman J. Pepsin and carbonic anhydrase isoenzyme III as diagnostic markers for laryngopharyngeal reflux disease. *Laryngoscope.* 2004;114:2129-2134.
46. Postma GN. Ambulatory pH monitoring methodology. *Ann Otol Rhinol Laryngol Suppl.* 2000;184:10-14.
47. Baldi F. Diagnostic strategy in patients with extraesophageal GERD. *Curr Gastroenterol Rep.* 2002;4:99-100.
48. Noordzij JP, Khidr A, Desper E, Meek RB, Reibel JF, Levine PA. Correlation of pH probe-measured laryngopharyngeal reflux with symptoms and signs of reflux laryngitis. *Laryngoscope.* 2002;112:2192-2195.
49. Sermon F, Vanden Brande S, Roosens B, Mana F, Deron P, Urbain D. Is ambulatory 24-h dual-probe pH monitoring useful in suspected ENT manifestations of GERD? *Dig Liver Dis.* 2004;36:105-110.
50. Bothwell M, Phillips J, Bauer S. Upper esophageal pH monitoring of children with the Bravo pH capsule. *Laryngoscope.* 2004;114:786-788.
51. Merati AL, Lim HJ, Ulualp SO, Toohill RJ. Meta-analysis of upper probe measurements in normal subjects and patients with laryngopharyngeal reflux. *Ann Otol Rhinol Laryngol.* 2005;114:177-182.
52. Dobhan R, Castell DO. Normal and abnormal proximal esophageal acid exposure: results of ambulatory dual-probe pH monitoring. *Am J Gastroenterol.* 1993;88:25-29.
53. Pellegrini CA, DeMeester TR, Wernly JA, Johnson LF, Skinner DB. Alkaline gastroesophageal reflux. *Am J Surg.* 1978;135:177-184.
54. Galli J, Calo L, Agostino S, et al. Bile reflux as possible risk factor in laryngopharyngeal inflammatory and neoplastic lesions. *Acta Otorhinolaryngol Ital.* 2003;23:377-382.
55. Sasaki CT, Marotta J, Hundal J, Chow J, Eisen RN. Bile-induced laryngitis: is there a basis in evidence? *Ann Otol Rhinol Laryngol.* 2005;114:192-197.
56. Park W, Hicks DM, Khandwala F, et al. Laryngopharyngeal reflux: prospective cohort study evaluating optimal dose of proton-pump inhibitor therapy and pretherapy predictors of response. *Laryngoscope.* 2005;115:1230-1238.
57. Eherer AJ, Habermann W, Hammer HF, Kiesler K, Friedrich G, Krejs GJ. Effect of pantoprazole on the course of reflux-associated laryngitis: a placebo-controlled double-blind crossover study. *Scand J Gastroenterol.* 2003;38:462-467.
58. El Serag HB, Lee P, Buchner A, Inadomi JM, Gavin M, McCarthy DM. Lansoprazole treatment of patients with chronic idiopathic laryngitis: a placebo-controlled trial. *Am J Gastroenterol.* 2001;96:979-983.

Join the author of this article on Wednesday, October 19, 2005, from 2 to 3 PM Eastern time for "Author in the Room," an interactive conference call aimed at closing the gap between knowledge—what is published in this article—and action—how much of this knowledge can be put into your actual practice. This call, facilitated by clinical experts, should help readers answer their questions and consider the implications of the article for their practice.

Author in the Room is brought to you by JAMA and the Institute for Healthcare Improvement, with generous support from The Robert Wood Johnson Foundation.

For more information or to register for "Author in the Room," please visit <http://www.ihl.org/IHI/Programs/ConferencesAndTraining/Author+in+the+Room.htm>.